

LO-TRAC[®] 200

Low-Speed Weigh-in-Motion & Axle-by-Axle Static Weighing System

System Description

The LO-TRAC 200 system provides a low cost means of measuring axle and gross vehicle weights either statically or dynamically providing either enforcement of vehicle weight limits for government authorities or overload prevention for transport companies.

The electronic unit is encased within a polycarbonate enclosure to IP65 standard and can either be mounted directly on an office wall or enclosed in a separate cabinet for external mounting.

Connections to external equipment are made via DIN rail connectors within the electronic unit. An RS232 (serial) connection is available for either a weight ticket printer or a desktop computer and an external, large character; weight display can be connected via RS485.

If a desktop computer is connected LO-WEIGH 100 Windows[®] software is available providing a graphical interface to the operator, functions for printing user specified weight tickets and data recording with report generation.



Main Features:

- Slow Speed Weigh-in-Motion
- Static Axle-by-Axle Weighing
- Vehicle Classification with automatic comparison to pre-determined axle and gross vehicle weight limits
- Built-in keypad & display for system configuration and key switch for calibration
- Vehicle speed and change of speed check measurement to ensure accurate weight results
- RS485 connection for external weight display
- LO-WEIGH 100 software with dedicated PC connection via Serial (RS232) connection
- Transient and lightning protection built in

Technical Information

Accuracy Data (WIM & Static):

Gross Vehicle Weight	±1%
Individual Axle Weight	±2%
Group Axle Weight	±2%
Block Weight	±10kg
Speed	±5%
Speed Range	1 to 16 kph

Note: Vehicle and axle weight accuracy is dependant upon site construction in accordance to TDC specifications.

Classification Accuracy:

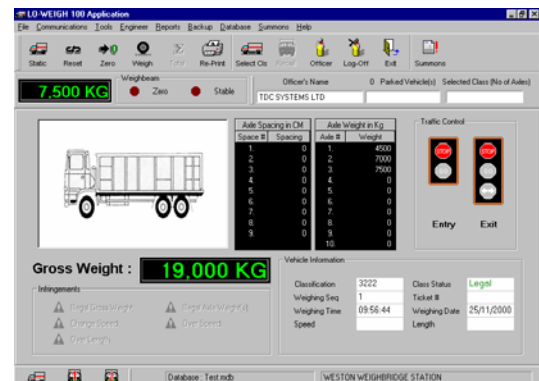
Rigid HGV	±99%
Articulated HGV	±99%
Draw-Bar Trailers	±99%

Electrical Connections:

Power	DIN Rail
Earthing	Common Earth Bolt
Weighbeam	DIN Rail
RS232/RS485	DIN Rail

Software:

LO-WEIGH 100 Compatible: Site Control, Weighing Operation Control, Data Recording, Report Generation and Diagnostics (Note: PC and Printer required)



Externally Installed Items:

WB30 Weighbeam and External Weight Display



Internal Lightning & Transient Protection:

Amplifier TDC AMPTP PCB

Operating Temperature Range:

-20°C to +65°C

Input/Output Ports:

RS232	PC or Ticket Printer
RS485	External Weight Display

Power:

85-264VAC @ 47-440Hz

Dimensions & Weight:

300 x 200 x 180mm (h w d)
5 kg

TDC
SYSTEMS LIMITED

58 Buckingham Road
Weston Industrial Estate
Weston-Super-Mare
North Somerset BS24 9BG
England

Tel: +44 (0)1934 644299
Fax: +44 (0)1934 644255
Email: sales@tdcsystems.co.uk
www.tdcsystems.co.uk

